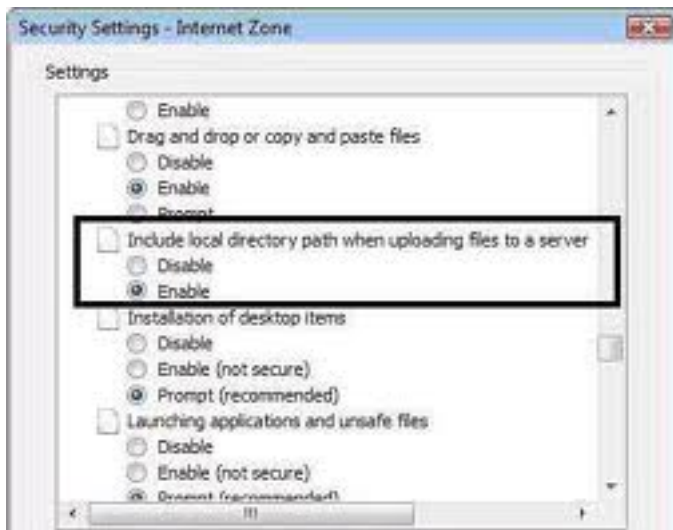


Click Start, Run and type INETCPL.CPL

If you've installed Internet Explorer 7, Internet Explorer 8 or Internet Explorer 9 you should choice the form Security then choice Internet zone seetings and Customer Level you may need to first check the Enable option ***Include local directory path when uploading files to a server.***



Go into Internet Explorer; Choose "Tools"; then select "Internet Options"; Click on Security; and select "Custom";

find the "Include local directory path when uploading files to a server" and click on "Enable"